



PH: 559-431-4131 FX: 559-431-4431

Sales email: sales@hornmachinetools.com

Info email: info@hornmachinetools.com

Website: www.hornmachinetools.com

40473 Brickyard Drive
Madera, CA 93636

*You name the application . . .
HMT has a machine for it*

Horn Machine Tools, Inc specializes in CNC & Semi-automatic tube benders, All-Electric CNC benders, Tube bender tooling, robotic tube cells and tube fabrication machinery of all types.

* **New Tube Benders:** HORN CNC Tube Bending machines, Unison All Electric Tube Bender, CNC Mandrel Bender, Handrail Bender, Elbow Bender, CSM CNC Tube Bender, Tube Bender Tooling, Tube Measuring Machines, Tube Lasers, Tubing bender, CNC Push Rolling Bender, Roll Bender, Shipyard Pipe Bender, Aircraft Tube Bender, Pipe Bender & Manual Tube Bender.

* **Used and Rebuilt Tube Benders:** Eaton - Leonard, Addison and AddisonMckee, PHI, Conrac, Wallace, Coast, Eagle, BLM, Bema, Pedrazolli, Pines, 3RC, Smith, UTE, Pedrick, IBP, Clark Lewis, Di-Acro, Schwarze and Schwarze-Wirtz, Trans Fluid, YLM, MiiC, Chiyoda, Adaptive Motion, Eurobend, Unison, Techno, Keins, Hines, Ineco, CML, Soco, CSM, Horn & HMT.

* **Rebuilding Tube Benders & Tube Bender Controls for:** Eaton - Leonard, Addison and AddisonMckee, PHI, Conrac, Wallace, Coast, Eagle, BLM, Bema, Pedrazolli, Pines, 3RC, Smith, UTE, Pedrick, IBP, Clark Lewis, Di-Acro, Schwarze and Schwarze-Wirtz, Trans Fluid, YLM, MiiC, Chiyoda, Adaptive Motion, Eurobend, Unison, Techno, Keins Hines, Ineco, CML, Soco, CSM, Horn & HMT.

They Come In Ugly; They Go Out Beautiful

HMT "Extreme Make-Over" Rebuilt Tube Benders

Rebuilding and Upgrading Tube Benders since 1991

This VB-800 had been damaged by flood water before the complete rebuild



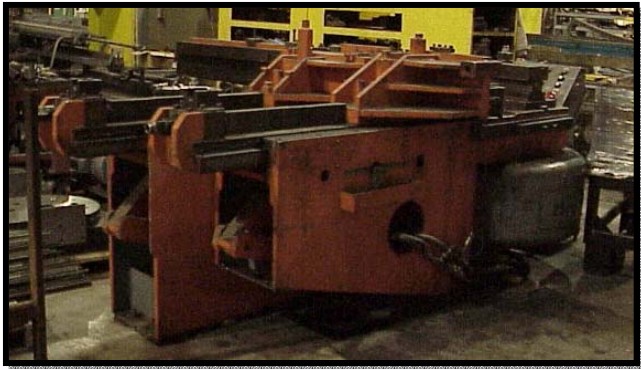
Eaton – Leonard VB800 before & after rebuilding



Pines #8 Rebuild



Pines #4 before & after rebuilding



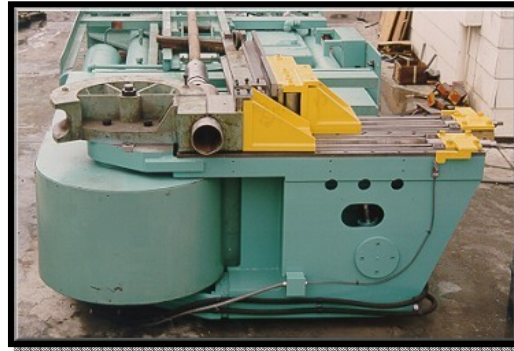
Pines #6 before & after rebuilding



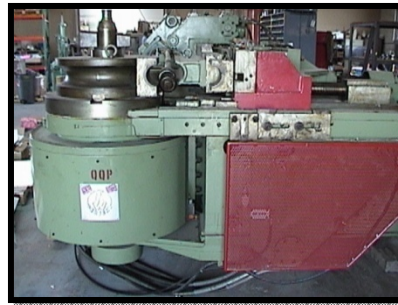
Take your worn out old bender and turn it into a new machine with HMT's frame up rebuilding process

The Wallace 448-10 bender shown above was a complete basket case. It had been disassembled for 15yrs. HMT rebuilt the machine for a Shipyard and provided tooling for bending shipyard details to Navy specs on sizes 2.5" to 10" CU-NI pipe





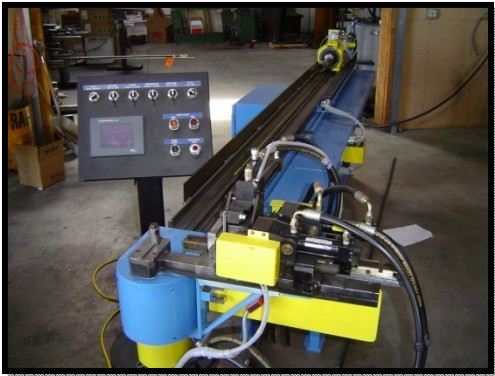
Wallace 506 before & after rebuilding



8" Schwarze-Wirtz C220 Booster Bender
Schwarze- Robitec



Pines #6 complete Frame Up Rebuild
They come in Ugly, They go out Beautiful!



PHI tube bender rebuilt and upgraded
For Boeing with digital carriage



Eaton – Leonard VB300 Multi-Stack



Pines MNC-150 CNC bender before & after